

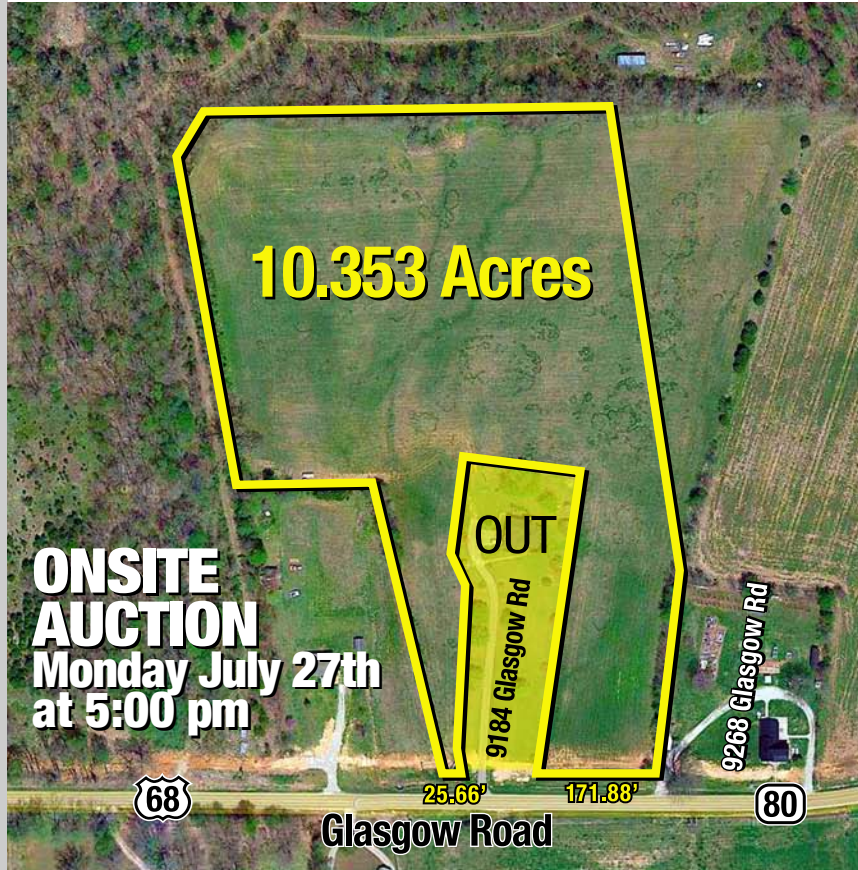


ABSOLUTE AUCTION

Glasgow Road (Hwy 68/80)

Smiths Grove, KY

Monday • July 27 ▶ 5pm



Make plans to join the Progressive Auction Group on **Monday, July 27th at 5 pm** for this **10.353 Acres Property Auction** at Glasgow Road (Hwy 68/80) in Smiths Grove, Kentucky.

THIS PROPERTY AT AUCTION FEATURES:

- 10.353 Acres (Known as Tract 3-2 of Glasgow Rd)
- Excellent Gentlemen's Farm or Row Crop Farm
- Many Building Site Options for your Dream Home
- Road Frontage with White Vinyl 4-Board Fencing
- Farm Fencing Partial Perimeter

For more information contact **Steve Henry (270-392-5325)**, or **Steve Cherry (270-392-5258)**.

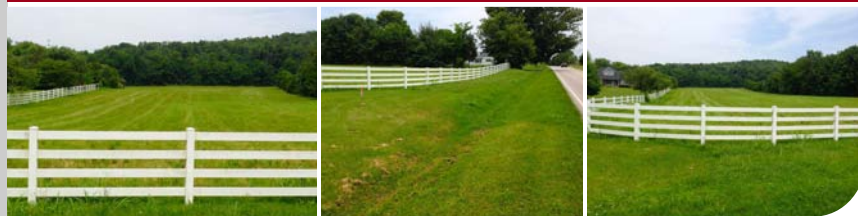


From Bowling Green, KY: Take I-65 North to Exit 36, then Hwy 68/80 East (Glasgow Rd). Property is on the Left. *SIGNS POSTED!

From Glasgow, KY: Take Hwy 68/80 West (New Bowling Green Rd). Property is on the Right. *SIGNS POSTED!

TERMS & CONDITIONS: 10% down DAY OF AUCTION with balance due on or before August 27th, 2015. All 2015 Real Estate Taxes shall be prorated between the Buyer and Seller through the date of closing. 7% Buyer's Premium will be added to the final bid in order to determine the overall contract sales price on Real Estate. Possession with deed. Bidders shall satisfy themselves as to condition, quality and description of property before bidding. All information and descriptions are believed to be correct, however, no warranties are given for accuracy. Property sold "as-is-where-is", without warranties expressed or implied. Announcements made the day of Auction shall take precedence over any advertisements.

Glasgow Rd (Hwy 68/80) • Smiths Grove, KY



For questions, information or for a special showing appointment, please contact Steve Henry or Steve Cherry



Steve Cherry
270-392-5258



Steve Henry
270-392-5325



PROGRESSIVE AUCTION GROUP / AUCTION CONCEPTS USA
2435 Fitzgerald Industrial Drive
Bowling Green, Kentucky



▶ For further auction information visit us at: ProgressiveAuctionGroup.com

Experience The Difference Of An Auction Group

For further information visit: ProgressiveAuctionGroup.com



STEVE CHERRY
CAI, CES, BAS, PRI
KY State Champion
Auctioneer
270-392-5258



STEVE HENRY
CES, PRI
Auctioneer
Certified Personal
Property Appraiser
270-392-5325



TRAVIS AYERS
CES, ATS, PRI
Auctioneer
270-779-1918



STEPHEN STUCY
PRI
Auctioneer
270-392-1255



NATHAN CHERRY
PRI
Apprentice
Auctioneer
270-202-8195



CERTIFIED ESTATE SPECIALISTS • FARM/LAND • PERSONAL PROPERTY • BENEFIT SPECIALISTS