



# AUCTION

**322**  
**Cumberland Circle**  
**AND Upper Iron Bridge**  
**Road Bowling Green,**  
**KY**

**ONSITE and SIMULCAST ONLINE AUCTION**

**ALL property to be sold at 322 Cumberland Circle on June 29<sup>th</sup> 5:30PM CST**

**Tract 1 - 322 Cumberland Circle:**  
**1,942 sqft, 3 BR, 2 Bath Brick**  
**home with fireplace on .41 acre**  
**lot (per PVA) with a two car**  
**attached garage.**



**Tract 2 - 12.72 Acres on Upper**  
**Iron Bridge Road: Backs up to**  
**Beautiful Barren River. Sewer**  
**Evaluation Site Test Passed.**  
**Ready for your getaway cabin or**  
**forever home just 14 Minutes**  
**from I-65**



**PLUS a...**  
**2008 Lexus SC Convertible**  
**Showing 160,XXX Miles**  
**AND**  
**2018 Cadillac XT5**  
**Showing 85,XXX Miles**



**ONLINE BIDDING BEGINS JUNE 15th**

**Open House (@ Cumberland Circle) - Friday June 19th 5:00PM to 6:30PM**

**Monday June 29<sup>th</sup> 5:30PM CST**

**(On June 29<sup>h</sup>, the online bidding will combine with the onsite, in-person bidding)**



**For more info call Steve Cherry (270-392-5258) or**

**Tracey Esters (270-202-7063).**

For further auction information visit: [www.ProgressiveAuctionGroup.com](http://www.ProgressiveAuctionGroup.com)



**PROGRESSIVE AUCTION GROUP**  
**AUCTION CONCEPTS USA**  
 2435 Fitzgerald Industrial Drive • Bowling Green, KY



**Experience The Difference Of An Auction Group | CERTIFIED ESTATE SPECIALISTS • FARM/LAND • PERSONAL PROPERTY • BENEFIT SPECIALISTS**



**Steve Cherry**  
**PRI, CAI, CES**  
**Auctioneer**  
 270-392-5258



**Steve Henry**  
**PRI, CPPA, CES**  
**Auctioneer**  
 270-392-5325



**Andrew Gott**  
**Auctioneer**  
 270-535-0777



**Dale Manley**  
**Auctioneer**  
 270-599-2044



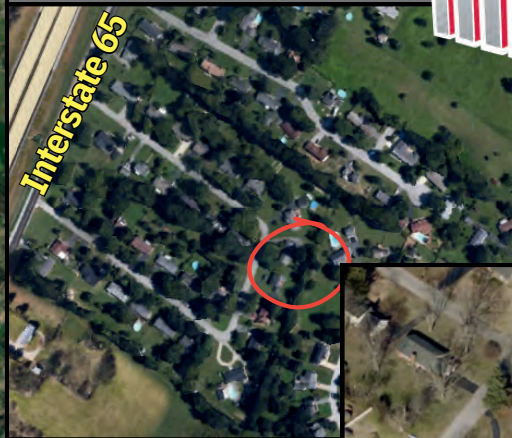
**David Wilbert**  
**Professional**  
**Ringman**  
 270-779-8587



**Tracey Esters**  
**Apprentice**  
**Auctioneer**  
 270-202-7063

## Tract #1

- 3 Bedroom 1 1/2 Bath Brick Ranch on Quiet Circle
- 6 Minutes to Scottsville Road I-65 Interchange
- 4 minutes to Cemetery Road and I-65 Interchange
- Moments to *Cumberland Trace Elementary School*
- and the new *Warren County Schools Impact Center*



## Tract #2



- 12 .72 Scenic Acres on Barren River
- Beautiful River Valley Views
- Abundant Wildlife Amid Large Timber
- Ideal Getaway or Full Time Living Location(s)
- Close access to I-65 and Barren River Lake



 **MORE INFORMATION AND PHOTOS**

VISIT US AT: [progressiveauctiongroup.com](http://progressiveauctiongroup.com)